

Essex House
Indianapolis, Indiana
390 Dwyer Kitchens

From Apartment
on the Drive
to Cabin
in the Woods



BULLETIN 852

Kitchens, Inc.

1509 Union Ave.

Phone 32-1761

MEMPHIS 4, TENN.

DWYER

Formerly Murphy-Cabranette

KITCHENS

PORCELAIN ON STEEL



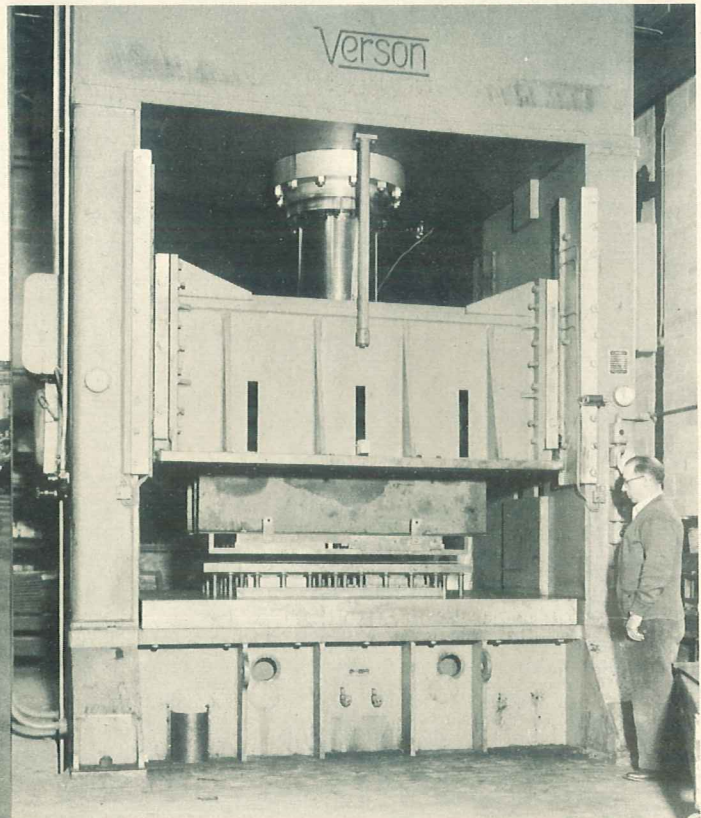
DWYER KITCHENS

**PRODUCED IN THEIR
ENTIRETY IN ONE
MODERN PLANT**

**Fronts and worktops of
genuine vitreous porcelain**

*By an organization specializing
in compact kitchens since 1926*

Design, engineering, manufacture and insistent improvement of compact kitchens has been the specialized work of this organization in a modern plant developed for this purpose.



Typical of the modern equipment in the Dwyer Plant is this giant hydraulic press on which one piece sink and range tops are formed. Left: Final stages of the gas range assembly line.

QUALITY CONTROL at every step!



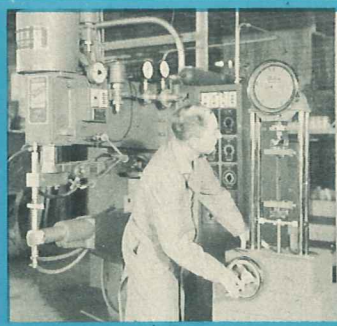
LEAK DETECTOR ROOM

Every Dwyer refrigerating system is tested for possible leaks with a super-sensitive electronic detector. A leak so small that it would not impair refrigerator operation for over 25 years can be detected instantly.



PORCELAIN TEST

The density of the vitreous porcelain on all surfaces of Dwyer Kitchens is electronically measured to one thousandth of an inch to insure proper thickness and uniformity.



WELDER TEST

Dwyer's 20 modern resistance welders . . . including those certified for aircraft . . . are electronically controlled. Periodic pull tests of welds makes certain that all machines are operating at peak efficiency.



THE "HOT ROOM"

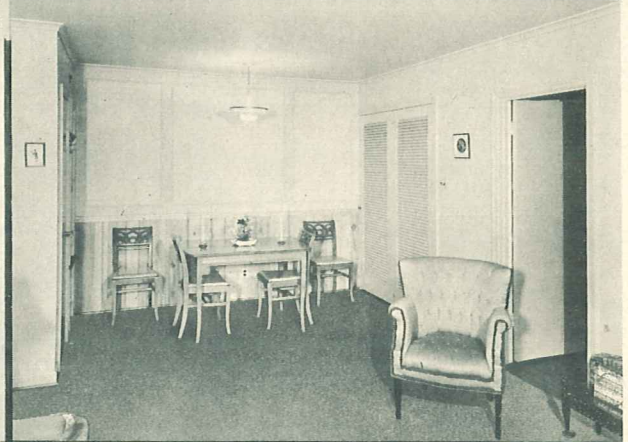
Every Dwyer refrigerator is exhaustively tested before shipment for five hours in our 110 degree "hot room." Complete refrigerating performance is automatically recorded. Any irregularity is cause for rejection.

FOR SPACE SAVING . . . WITH FULL KITCHEN CONVENIENCE



Typical Use of Dwyer Kitchens

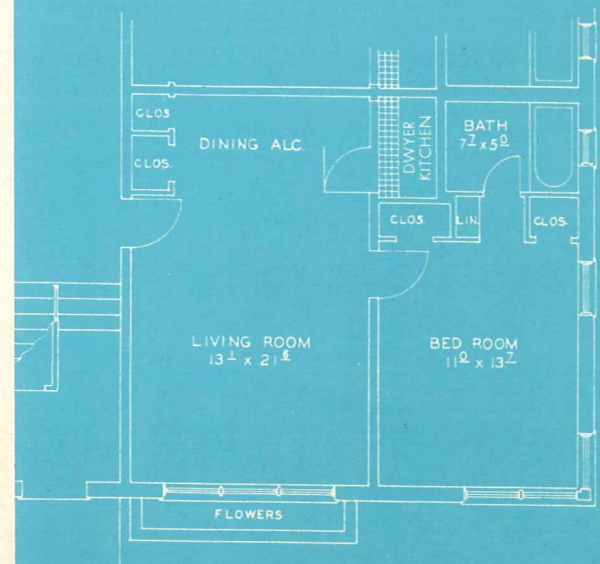
You'll find Dwyer Kitchens in widely varied uses. This one bedroom apartment is taken, almost at random, from thousands of installations.



THIS 8-apartment building was designed for spacious living without the waste space usually involved in unwieldy kitchens.

Bedroom and bath are roomy and modern. Living-room extends the full length of the apartment. Save for meal periods, the entire room is living space. At one end is the dining area, within arm's reach of the convenient Dwyer Kitchen.

When not in use, the Dwyer Kitchen is concealed behind smartly-styled louvered doors of jack-knife type. When opened as shown, the Dwyer Kitchen is available for use but still concealed from view. Note that bath and Dwyer Kitchen are back to back . . . to cut plumbing costs.



Proven!
IN NEW
APARTMENTS



**Northwestern University
 Apartments, Evanston, Ill.**

Outstanding example of modern trend in design and construction. In relatively small floor areas, 98 Dwyer Kitchens were important in the problem of providing ample living space without sacrifice of kitchen and dining facilities.

Architects: Holabird & Root
 Contractor: R. C. Wieboldt Co.



**Harkness Memorial Hall
 New York City**

Modern apartments for personnel of Presbyterian Hospital, Columbus-Presbyterian Medical Center. 183 Dwyer Kitchens chosen for living convenience of busy people . . . with assurance of trouble-free operation and minimum maintenance costs.

Architects: Voorhees, Walker, Foley & Smith
 Builders: Vermilya-Brown Co., Inc.



**"BUILDER'S KNOW-HOW PROVIDES
 LOW-COST RENTALS"***

Over 400 Dwyer Kitchens have gone into the highly successful Bissonet Plaza Apartments built by King & Sheets Corporation in Houston, Texas. Architect Joseph B. Reynolds specified Dwyer Kitchens to save waste space while giving tenants full kitchen convenience.

**Title of widely read article on this development, which appeared in national magazines.*

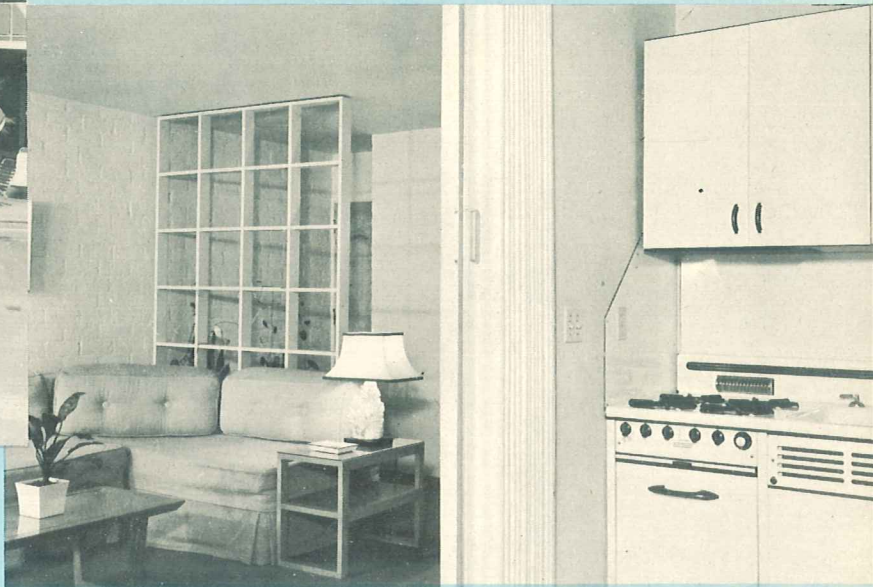




Above: Court of the Beverly-Carlton.
 Right: Living-room as viewed from kitchen.
 Lower right: Beverly-Landau as viewed from street.

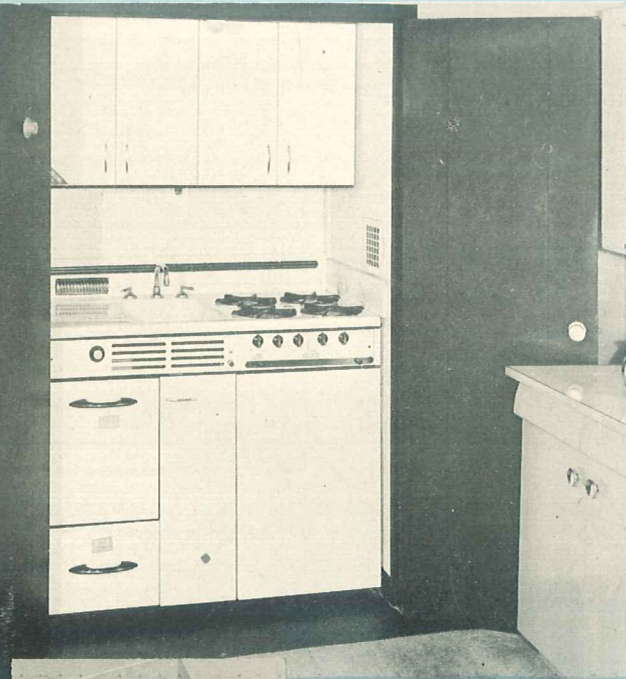
DWYER KITCHENS AUGMENT LUXURY LIVING

Beauty and convenience were sought in the Beverly-Carlton and Beverly-Landau Apartments in Beverly Hills, California . . . pool, patio and palatial detail. Architect Sam Reisbord chose Dwyer Kitchens that may be cleverly concealed behind curtitions when not in use.



THROUGHOUT THE UNITED STATES AND IN 37 FOREIGN LANDS

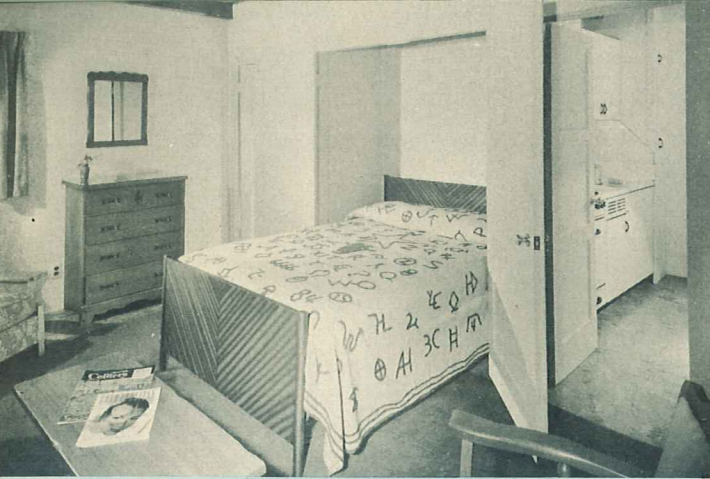
From Hawaii to Honduras, from Belgium to Italy, from Iceland to the Belgian Congo, you'll find Dwyer Kitchens . . . as in each apartment of the new Hotel Las Brisas in Caracas, Venezuela. Thirty-nine overseas representatives sell and service Dwyer Kitchens in Europe, Asia, Africa and the islands of the Seven Seas.



PRACTICAL APARTMENTS FOR TODAY'S LIVING

Busy people find living comforts with minimum housekeeping chores in the Ford Apartments in downtown St. Louis. Over 100 Dwyer Kitchens are concealed behind flush-panel doors with a sleek ebony finish.





Proven!
**IN VACATION
 PROPERTIES**

HIGHWAY HOTELS . . . COAST TO COAST

Guests stay longer when Dwyer Kitchens add to living convenience. Sleek porcelain surfaces and streamlined styling make cleaning and maintenance of Dwyer Kitchens an easy chore. Here at SunAir Lodge, Tucson, Arizona you see the Dwyer Kitchen and dining area as viewed from the western style bedroom.



IN VACATION HOMES

In minimum space, and with minimum work, today's vacation home enjoys complete and convenient kitchen facilities . . . with a Dwyer Kitchen. Mother gets a better vacation too, for her kitchen chores are simplified.



**IN WINTER RESORTS
 of PRESTIGE**

Sea View Hotel, Miami Beach, Florida. One of the most modern and impressive additions to the architecture of this far-famed winter playground. In addition to hotel rooms, this smart hostelry contains 38 apartments each equipped with a Dwyer Kitchen.

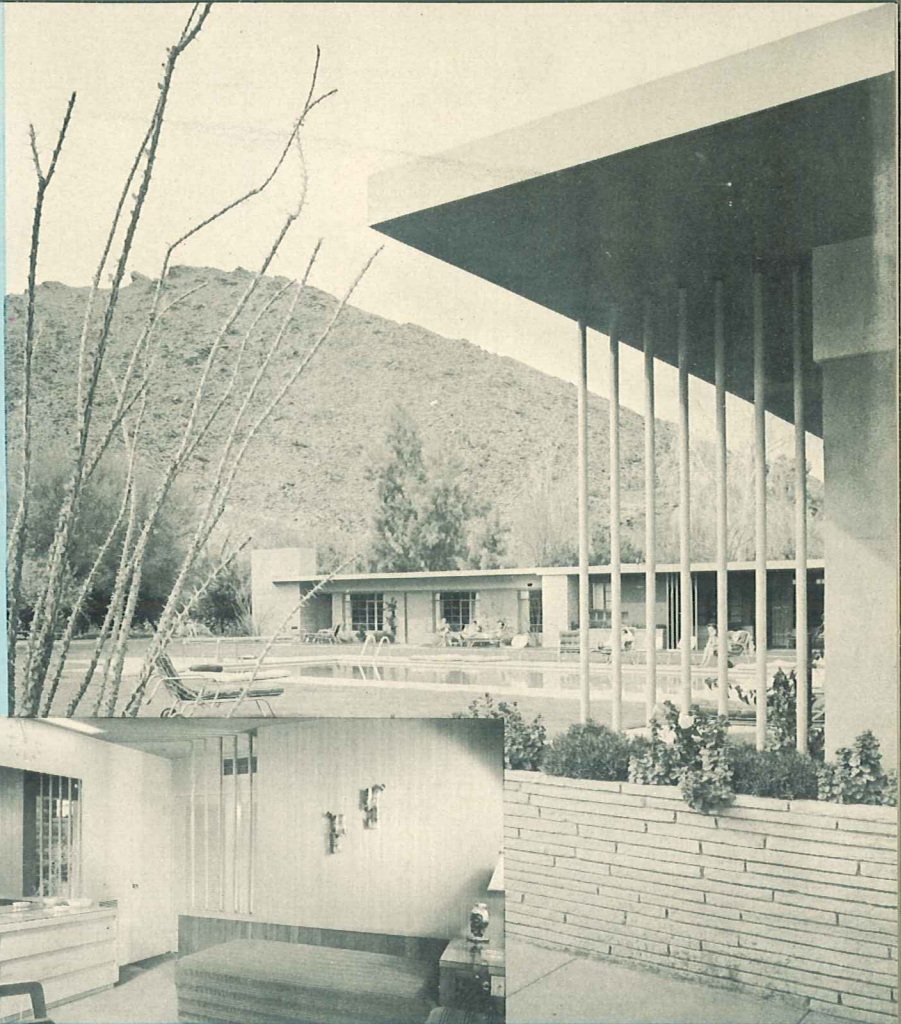
Architect: Roy France
 Builders: Feldman Construction Co.



PALM SPRINGS, CALIFORNIA

At this internationally famous resort center you'll find "Town and Desert" . . . a motel that rivals the most pretentious hotel luxury . . . *plus* the enviable convenience of Dwyer Kitchens.

"Town and Desert", with its Dwyer Kitchens, encourages the longer tenancy that helps profits.



WOHL STUDIOS, MIAMI

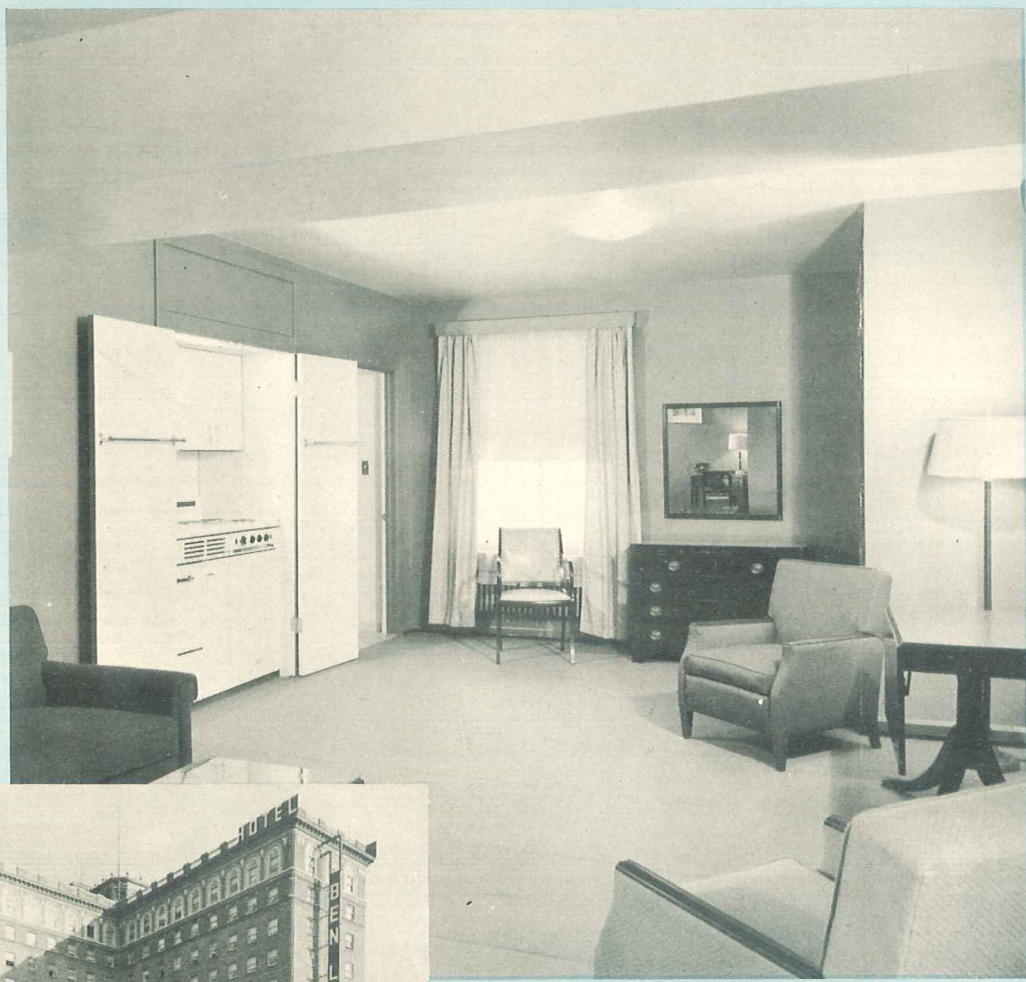
Two-story suites . . . affluent luxury in which Dwyer Kitchens are important. Here vacationers enjoy convenient facilities for preparation of meals and for private dining close to their spacious living room. Dwyer Kitchens add to living convenience and guests remain longer. The porcelain surfaces are easily cleaned—add scant work to routine room maintenance.



Proven!
IN
REMODELING

12 APARTMENTS FROM AN OLD MANSION IN GAINESVILLE, FLORIDA

Interior remodeling . . . with Dwyer Kitchens . . . changed this potential tax-eater into 12 profitable apartments.
 Architect: Sanford Groin
 Contractor: Fred H. Winston



1400 LAKE SHORE DRIVE, CHICAGO

When these luxury apartments were modernized in 1939, 271 Dwyer Kitchens were installed. Upper bracket occupants still enthuse over these fourteen-year old Dwyer Kitchens . . . continuing proof of the permanent beauty of their porcelain on steel finish.



HOTEL BEN LOMOND, OGDEN, UTAH

Well-planned remodeling provided 13 quickly-rented apartments for long-term guests. Dwyer Kitchens were used as shown in the view at the left . . . easily concealed behind flush panel doors when not in use. And the easily-cleaned vitreous porcelain of Dwyer Kitchens adds but little to the labor of routine room maintenance.



RESCUED FROM OBLIVION BY SMART REMODELING

Overrun by weeds and seemingly destined for wrecking to save taxes, this 110-year old Toledo, Ohio mansion was remodeled to income status by the Blair Realty & Investment Co.

Addition of graceful lacy iron grillwork, repainting in fresh green and white, and landscaping combined to restore charm to the exterior.

The interior was remodeled to make eagerly sought apartments. Each has its Dwyer Kitchen . . . concealed by louvered doors when not in use.



APARTMENTS BRING PROFITS IN SMALL TOWNS TOO

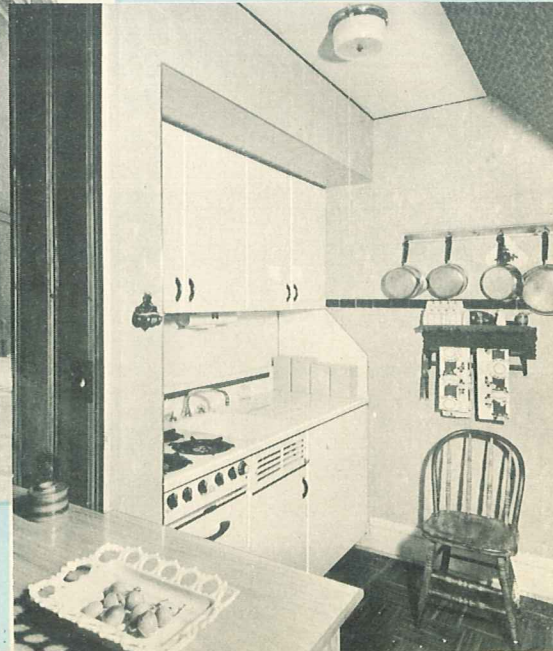
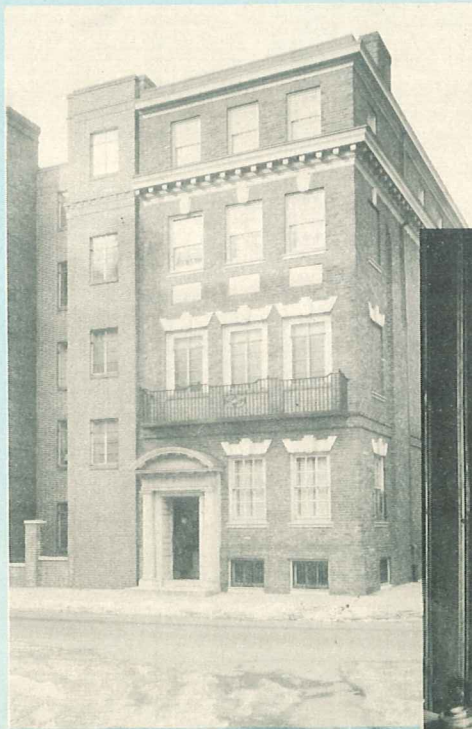
J. Lyons tackled this old 9-room house in Inkster, Michigan. It now contains 5 cozy two-room apartments each with its space-saving, labor-saving Dwyer Kitchen.

Tax-eating old homes like these beg to be remodeled into needed and profit making small apartments.



OLD PHILADELPHIA TOWN HOUSE NOW 12 APARTMENTS

Over a half-a-century old, this once regal Cadwallader mansion has been made to pay profits. Skilled planning by Architect Morris J. Rosenthal and decorating by Gimbel Brothers have combined to produce 21 apartments . . . each with Dwyer Kitchen.



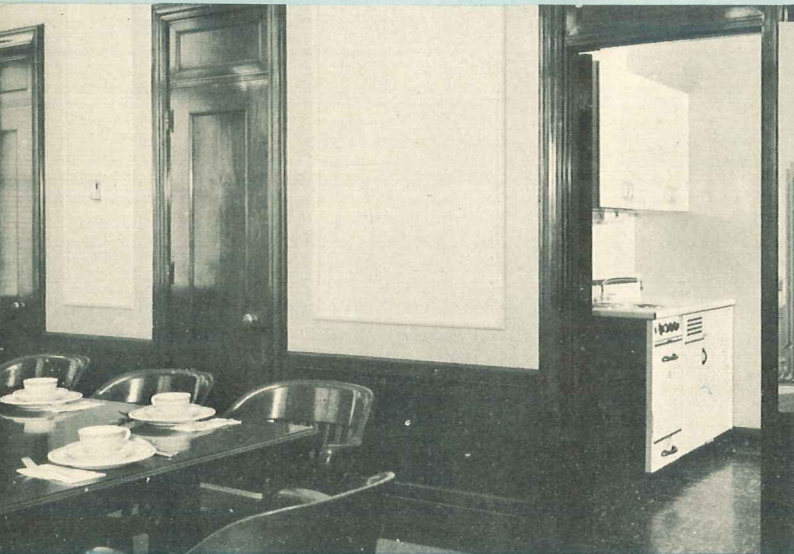
Proven!

IN BUSINESS AND IN SPECIAL SERVICE



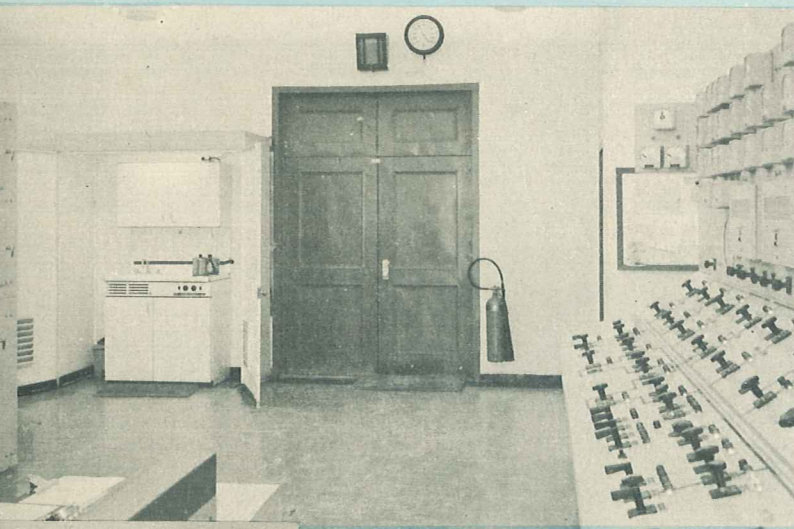
WESTCHESTER HIGH SCHOOL, LOS ANGELES

Adjoining the Teachers' Room is a Dwyer Kitchen . . . convenient to use in preparing full meals or light refreshment. Vitreous porcelain work top and fronts are easily kept clean by part-time employees or volunteer help.



TELEPHONE COMPANIES FROM COAST TO COAST

Offices of Pacific Telephone and Telegraph Company, Los Angeles illustrated on left. Important staff conferences need not suffer interruptions of outside trips for coffee or meals. Dwyer Kitchens play an important role in telephone exchanges, large or small . . . for night shifts, for lunches and for better employee relations.



BANK EMPLOYEES LIKE DWYER KITCHENS

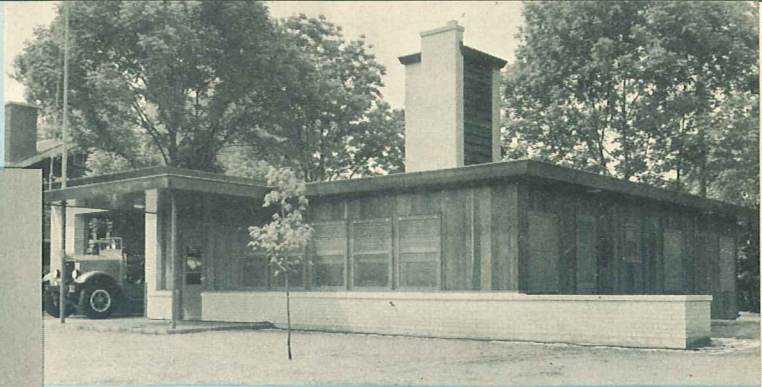
Midday hours are important for banking. To save time, to be free from delay and rush in outside restaurants and to assure facilities for wholesome food in areas where desirable restaurants are not easily reached . . . employees look to the convenience of a Dwyer Kitchen as in the 1st Savings Bank of Forest Park-River Forest, Ill.

THE NIGHT SHIFT ALSO EATS

In the Control Room of the Southern California Edison's plant at Redondo Beach, you'll find a Series 39 Dwyer Kitchen. Takes up less than 8 square feet of floor space yet it provides convenient facilities for making coffee, preparing food, for ice

cubes, refrigeration for storage of food and modern sink for washing dishes. This welcome morale builder was included by Stone & Webster Engineering Co., when they designed and built this plant.





EVERY FIRE STATION NEEDS A KITCHEN

In this new station in South Bend, Indiana, is this handsome Dwyer Kitchen. In a recess less than six feet wide it provides modern range with oven, 6 cubic foot refrigerator with ice cubes and frozen food compartment, deep bowl sink and generous cupboard storage. Genuine vitreous porcelain fronts and worktops make cleaning easy.



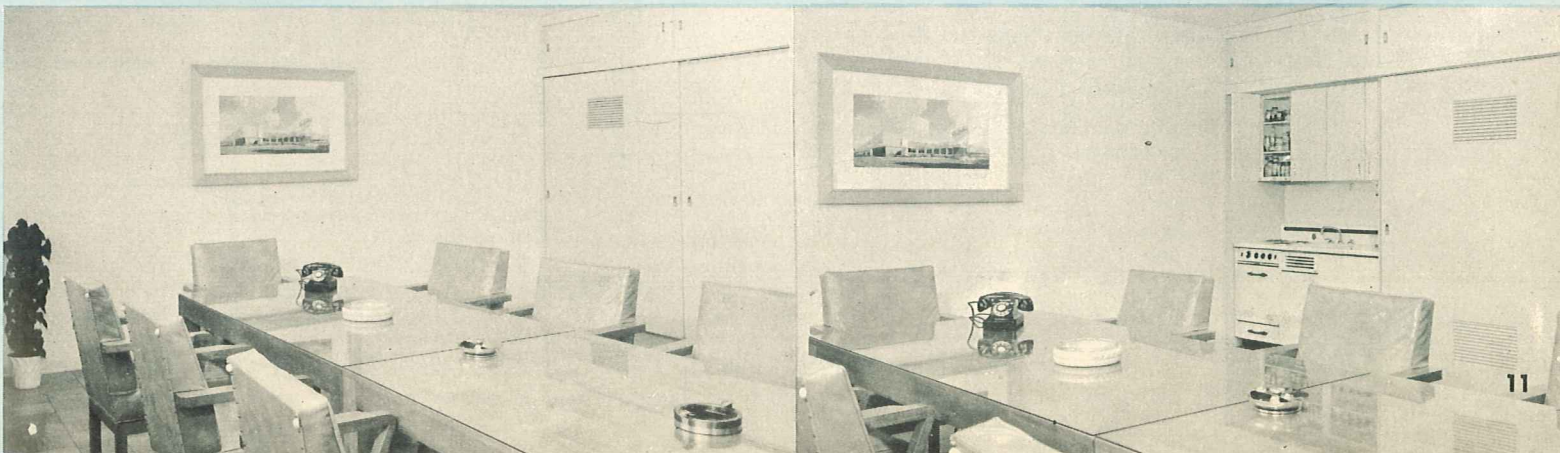
FOR A CHURCH

The Willshire Methodist Church in Los Angeles uses a Dwyer Kitchen in a nursery where children are cared for while parents attend services. Hundreds of churches have discovered the convenience and practicality of Dwyer Kitchens in meeting room and recreation halls.



FOR EXECUTIVE CONFERENCES

Behind sliding doors in this executives' conference room of Ralph's of Los Angeles is a convenient Dwyer Kitchen. No need to hurry out for coffee or light lunches . . . or a heavy meal. And the porcelain of the Dwyer Kitchen washes clean as easily as the glass top of the conference table.



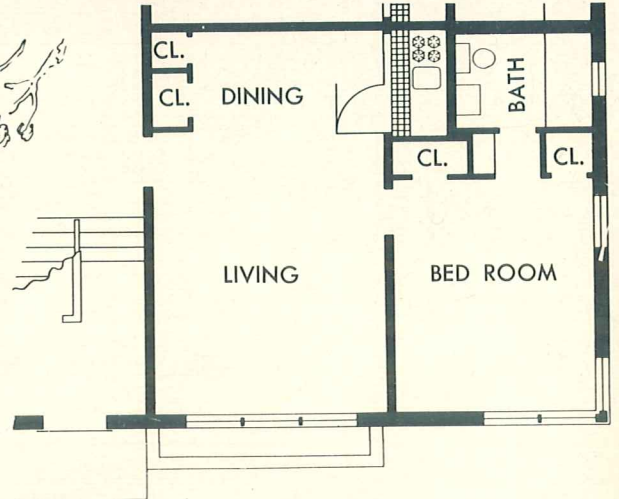
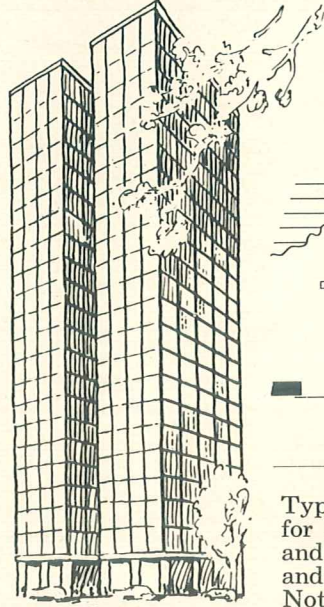
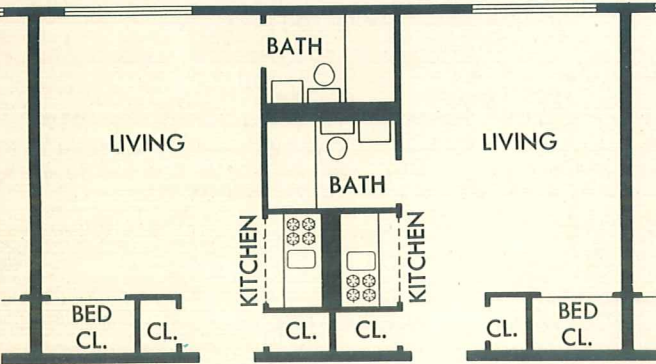
DWYER KITCHENS

Facilitate *Space-Saving* Layouts

In these varied unit plans Dwyer Kitchens provide full kitchen convenience while saving room for more spacious living.

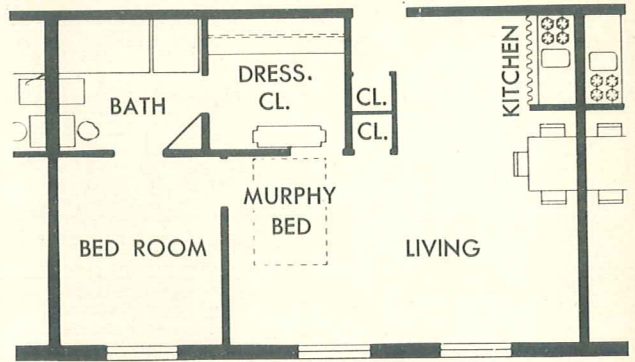
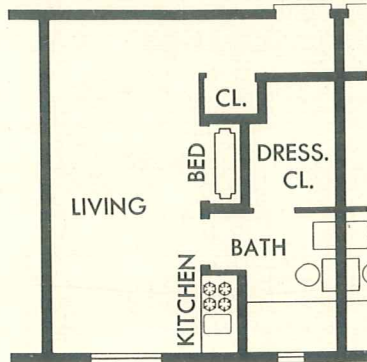
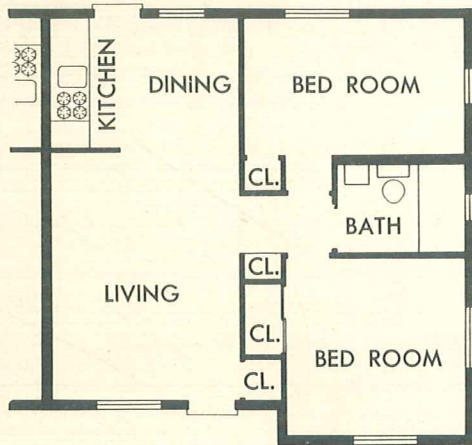
Many plans show back-to-back installations of kitchens and baths for building economy. Dwyer Kitchens, when recessed, can be easily concealed with standard doors, jack-knife doors, folding doors, venetian blinds or drapes.

LIVABLE APARTMENTS



From the notable Phillips Apartments in Bartlesville, Oklahoma. Convenient Dwyer Kitchens and Murphy Beds provide comfortable living in economical space. 179 Dwyer Kitchens in efficiency and one-bedroom apartments. Back-to-back kitchens and baths for installation economy.

Typical of thousands of Dwyer installations. Lovely for living . . . practical to build. Spacious living and dining areas, bedroom, plenty of closet space and full bath . . . without wasting a foot of space. Note economy of single core plumbing.



Half of a practical two-bedroom duplex. Dwyer Kitchen with dining area permits spacious living in economical space. An attractive example of such a kitchen-dining area is found in the Northwestern University Apartments on page 4.

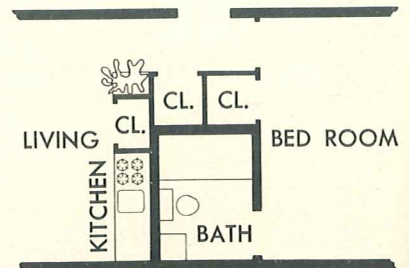
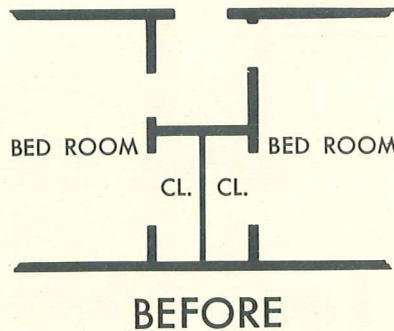
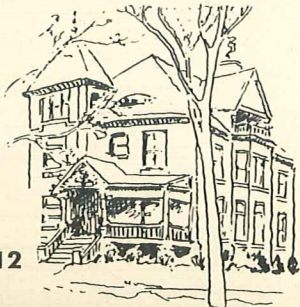
Efficiency apartment. Complete livability in minimum space. Dwyer Kitchen, bed closet, dressing closet, bath and full-size living room.

Apartments similar to those in new 14-story, 392-unit air-conditioned Essex House in Indianapolis. Roomy living in economy space. Convenient Dwyer Kitchen, living room with dining area, closet for additional bed, dressing closet and full bath.

PROFITABLE REMODELING

This shows only a part of an old home converted from aging tax eater into apartments . . . an example of remodeling for profit. In this portion two bedrooms were made into a welcome 2-room apartment. The old-fashioned walk-in closets became a bath. A Dwyer Kitchen is convenient to the living-dining area.

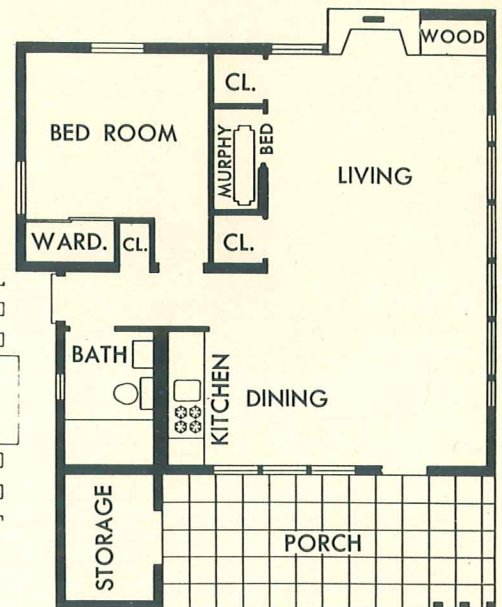
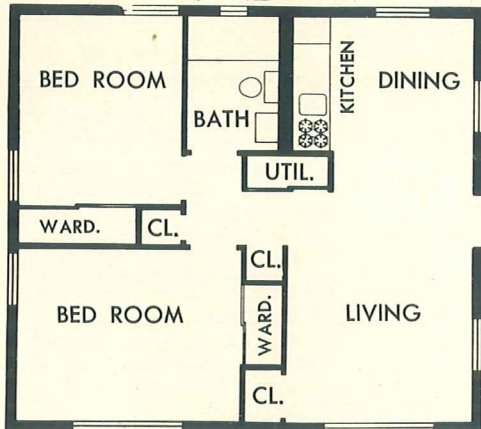
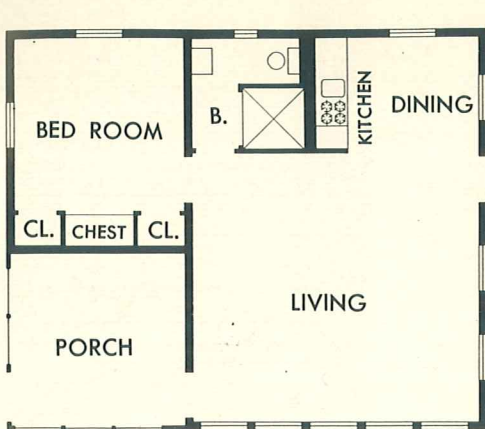
Dwyer Kitchens are the key to successful remodeling. They fit into small space and permit remodeling that might otherwise be impractical.



AFTER

BETTER VACATION HOMES

In minimum space, and with minimum work, today's summer home enjoys complete and convenient kitchen facilities with a Dwyer Kitchen. Mother gets a better vacation too, for her kitchen chores are simplified.



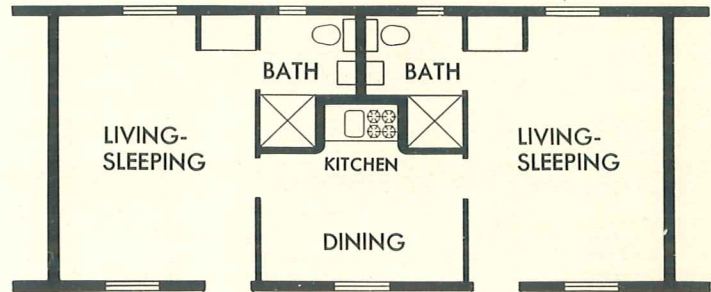
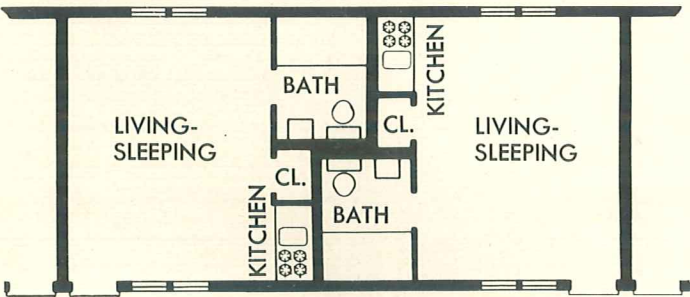
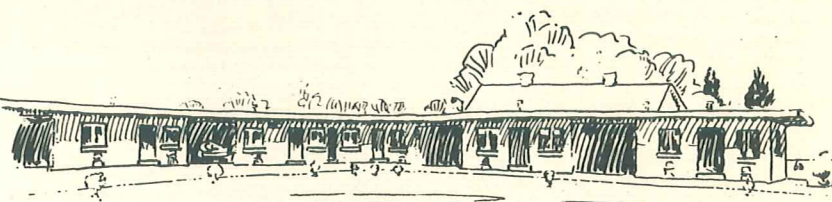
Start with living-sleeping room, bath and Dwyer Kitchen. Bedroom and porch may be added any time. Note living space in this small cottage . . . roominess made possible by the small space required by a Dwyer Kitchen.

More than a vacation cabin . . . an ideal small home. Comfortable for living while economical to build. Side entrance saves space of passageways, simplifies placement of furniture. Observe building economy of bath and utilities in a compact center.

Livable summer cottage or year-round home. Roomy living space with convenient Dwyer Kitchen and dining area. Fireplace, wood storage, concealed bed for extra sleeping facilities, full bath and bedroom. Separate room for storage or utilities.

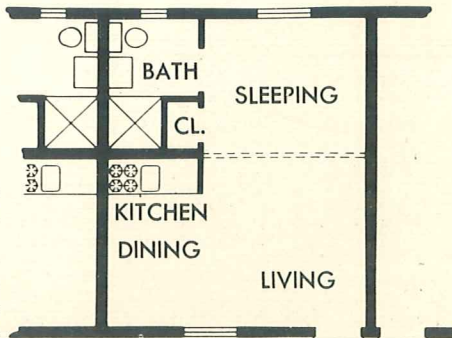
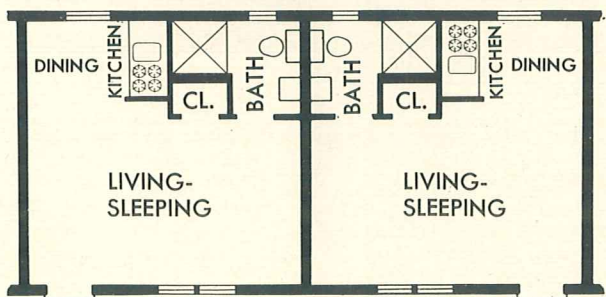
MORE PROFITABLE MOTELS

Motels and resort cabins use Dwyer Kitchens to encourage longer stays at better rentals. The porcelain surfaces of a Dwyer Kitchen are easy to clean . . . so that its gleaming whiteness always appeals to incoming guests.



Popular vacationland motel plan . . . typical of both vacationer convenience and practical construction. Outside baths. Full kitchen convenience. Plenty of closet space. Note how little floor space is required for the Dwyer Kitchen.

An interesting . . . and widely used . . . multi-use plan. Rent the rooms separately as bedrooms. Rent either room with kitchen-dining facilities. Rent the complete suites, with all facilities, to a family.



Here's how one enterprising motel operator drew guests for longer occupancy. He added Dwyer Kitchens to his rooms . . . providing full kitchen facilities and arranging the adjoining space for dining. This floor plan, efficient for rental, makes the addition of Dwyer Kitchens simple and practical.

Motel operators are moving rapidly toward plans of this type. Here are space for living and bedroom privacy plus the welcome convenience of a Dwyer Kitchen. Bedroom enclosure is effected with wall and door construction or drapes of fabric or bamboo. Dwyer Kitchen requires scant space and provides the facilities which encourage longer stays.

DWYER KITCHENS with GAS or ELECTRIC RANGE

SERIES 39

With gas or electric range. Available 39" long for installation against building wall with kitchen ends exposed—Not available in recess model.

Catalog No.	Range	Length	Height	Sink Top
G-39-81-S	Gas	39"	81"	Standard
E-39-81-S	Elec	39"	81"	Standard

GAS RANGE

2 top burners (standard size). Modern aluminum alloy head top burners. Automatic flash lighting. No oven. American Gas Assn. approved.

ELECTRIC RANGE

2 Standard surface units (1250 watts each)..... 2500 watts
1 Convenience outlet 660 watts

Wired for 115/230 volt, 3 wire, single phase current. Wired on special order for 115 volt AC lighting circuit. The convenience outlet is omitted on 115 volt service and unit is equipped with special 3 heat interlocking switches which automatically limit load to 1250 watts. Units will operate simultaneously on "Low" and "Medium" heats on this current and either burner can be operated singly on "High" heat. U. L. approved.

REFRIGERATOR

Storage volume (net)..... 4.0 cu. ft.
Shelf area (net)..... 7.9 sq. ft.
Ice cubes 3.9 lbs. (48 cubes)

SINK

Sink and range top one continuous piece of heavy 14" gauge steel with acid resisting porcelain finish. 3 1/2" drain opening with crumb cup strainer, chrome plated deck type aerated faucet.

UPPER STORAGE CABINET

Storage volume (net)..... 5.5 cubic ft.
Shelf area (net)..... 9. square ft.

SHIPPING WGT. (Domestic) Approx.

Base Section 355 lbs. Upper storage cabinet 131 lbs. Complete kitchen 486 lbs.

FOR COMPLETE INFORMATION WRITE FOR BULLETIN No. 39

SERIES 48

With gas or electric range and with 24" or 30" height upper storage cabinet. Available 48" long for installation against building wall with kitchen ends exposed. Also available 51" long with sink top having integral ends and fillers for installation in recess.

Catalog No.	Range	Length	Height	Sink Top
G-48-81-S	Gas	48"	81"	Standard
G-48-81-E	Gas	51"	81"	Integral ends for recess
G-48-87-S	Gas	48"	87"	Standard
G-48-87-E	Gas	51"	87"	Integral ends for recess
E-48-81-S	Elec	48"	81"	Standard
E-48-81-E	Elec	51"	81"	Integral ends for recess
E-48-87-S	Elec	48"	87"	Standard
E-48-87-E	Elec	51"	87"	Integral ends for recess

GAS RANGE

4 Top burners: 3 standard, 1 giant. 2 oven burners: separate bake and broil. Oven dimensions: width 13 1/4", clear depth, 19", overall height 15 1/2", clear height under broiler burner 11 3/8". Automatic oven control. American Gas Assn. approved.

ELECTRIC RANGE

1 Large surface unit..... 2100 watts
2 Standard surface units (1250 watts each)..... 2500 watts
1 Convenience outlet 660 watts
2 Oven Burners: separate bake and broil, Oven burner load at maximum preheat..... 4600 watts

Range load 9860 watts
Total connected load including refrigerator..... 10,085 watts

Wired for 115/230 volt 60 cycle, AC current. Wired for other voltage on special order. Oven dimensions: Width 13 1/4", clear depth 19", overall height 15 1/2", clear height under broiler 11 3/8". UL approved.

REFRIGERATOR

Storage volume (net)..... 4.0 cu. ft.
Shelf Area (net)..... 7.9 square feet
Ice cubes 3.9 lbs. (48 cubes)

SINK

Sink and range top one continuous piece of heavy 14 gauge steel with acid resisting porcelain finish. 3 1/2" drain opening with crumb cup strainer, chrome plated deck type aerated faucet.

UPPER STORAGE CABINETS

Series	Cabinet height	Volume	Shelf area
48-81	24"	8 cu. ft.	12 sq. ft.
48-87	30"	10 cu. ft.	12 sq. ft.

SHIPPING WGTs. (Domestic) Approx.

Base Section 496 lbs. Upper storage cabinet 162 lbs. Complete Kitchen 658 lbs.

FOR COMPLETE INFORMATION WRITE FOR BULLETIN No. 1149

SERIES 60

With gas or electric range. Available 60" long for installation against building wall with kitchen ends exposed. Also available 63" long with Sink top having integral ends and fillers for installation in recess.

Catalog No.	Range	Length	Height	Sink Top
G-60-RS	Gas	60"	87"	Standard
G-60-RE	Gas	63"	87"	Integral ends for recess
E-60-RS	Elec	60"	87"	Standard
E-60-RE	Elec	63"	87"	Integral ends for recess

GAS RANGE

4 top burners, 3 standard, 1 giant. 2 oven burners, separate bake and broil. Oven dimensions: width 16", clear depth 19", overall height 15 1/2", clear height under broiler burner 11 3/8". Available for use with all types of gas. Automatic oven control. Approved by American Gas Assn.

ELECTRIC RANGE

1 Large surface unit..... 2100 watts
2 Standard surface units (1250 watts each)..... 2500 watts
1 Convenience outlet 660 watts
2 Oven burners: separate bake and broil. Oven burner at maximum "preheat"..... 4600 watts

Connected load 9860 watts
Wired for 115/230 volt, 60 cycle, AC current. Wired for other voltage on special order. Oven size: width 16", clear depth 19", height overall 15 1/2", clear height under broiler burner 11 1/2". UL approved.

REFRIGERATOR

Storage volume (net)..... 4.4 cubic feet
Shelf area (net)..... 9.9 square feet
Ice cubes *3.2 lbs.—42 cubes*
*Frozen food compartment has capacity for additional 4 trays (84 cubes) or 12 standard frozen food packages.

SINK

Sink and range top one continuous piece of heavy 14 gauge steel with acid resisting porcelain finish. 3 1/2" drain opening with crumb cup strainer, chrome plated deck type aerated faucet.

UPPER STORAGE CABINET

Storage volume (net)..... 12 cu. ft.
Shelf Area (net) 15 sq. ft.

SHIPPING WGTs. (Domestic) Approx.

Base Section 592 lbs. Upper storage cabinet 188 lbs. Complete kitchen 780 lbs.

FOR COMPLETE INFORMATION WRITE FOR BULLETIN No. 752

SERIES 69

With gas or electric range. Available 69" long—for installation against building wall with kitchen ends exposed. Also available 72" long with sink top having integral ends and fillers for recess installation.

Catalog No.	Range	Length	Height	Sink Top
G-69-RS	Gas	69"	87"	Standard
G-69-RE	Gas	72"	87"	Integral Ends for Recess
E-69-RS	Elec	69"	87"	Standard
E-69-RE	Elec	72"	87"	Integral Ends for Recess

GAS RANGE

4 top burners, 3 standard, 1 giant. 2 oven burners, separate bake and broil. Oven dimensions: width 16", clear depth 19", overall height 15 1/2". Clear height under broiler 11 3/8". Available for use with all types of gas. Automatic oven control. Approved by American Gas Assn.

ELECTRIC RANGE

1 Large Surface unit..... 2100 watts
2 Standard Surface units (1250 watts each)..... 2500 watts
1 Convenience outlet 660 watts
2 Oven burners: separate bake and broil, oven burner at maximum preheat..... 4600 watts

Connected load 9860 watts
Wired for 115/230 volt, 60 cycle AC current, wired for other voltage on special order. Oven size, width 16", clear depth 19", overall height 15 1/2", clear height under broiler 11 1/2". UL approved.

REFRIGERATOR

Storage volume (net)..... 6.0 cubic ft.
Shelf Area 12.8 square ft.
Ice cubes 3.2 lbs.—42 cubes*
*Frozen food compartment has capacity for additional 4 trays (84 cubes) or 12 standard frozen food packages.

SINK

Sink and range top—one continuous piece of heavy 14 gauge steel with acid resisting porcelain finish. 3 1/2" drain opening— with crumb cup strainer, chrome plated deck type aerated faucet.

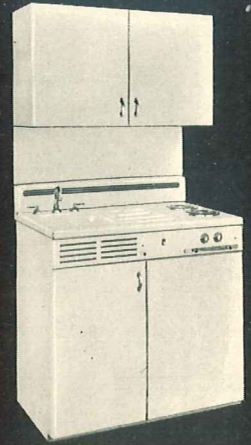
UPPER STORAGE CABINET

Storage volume (net)..... 13.75 cubic ft.
Shelf Area (net)..... 17.25 square ft.

SHIPPING WGTs. (Domestic) Approx.

Base Section 658 lbs. Upper storage cabinet 205 lbs. Complete kitchen 863 lbs.

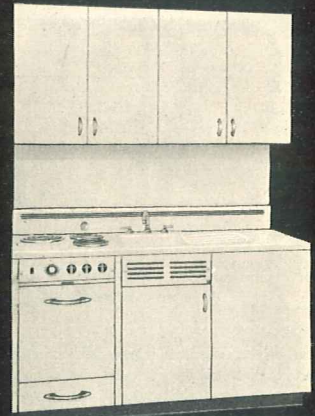
FOR COMPLETE INFORMATION WRITE FOR BULLETIN No. 752



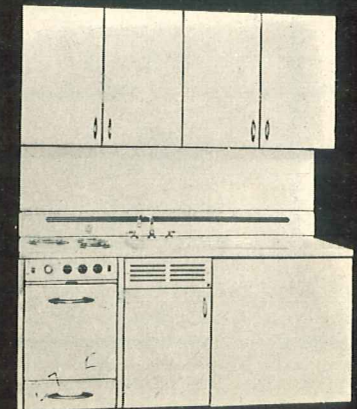
SERIES 39—Standard Model—Electric



SERIES 48—Standard Model—Electric

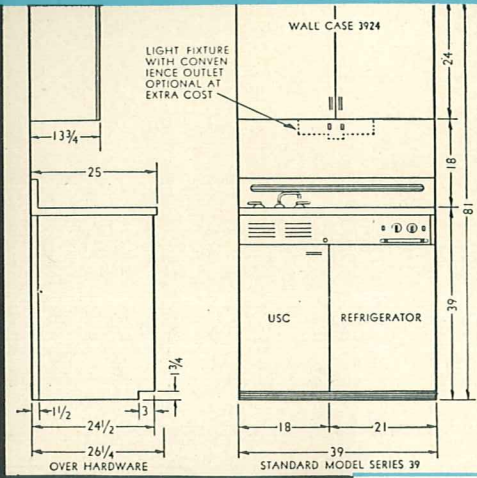


SERIES 60—Standard Model—Electric



SERIES 69—Standard Model—Electric

4 SIZES — for AGAINST-THE-WALL or RECESS INSTALLATION



RECESS MODELS

Series 48, 60 and 69 made in both Standard and Recess Models. Series 39 made in Standard Model only.

Recess Models are specifically designed for installation with building walls adjacent to sides of kitchen. The sink-and-range-top backrail of a Recess Model continues around each end, thus eliminating cracks between work surface and adjacent recess walls.

Sink tops on Recess Models are 3" longer than Standard Models. Necessary 1 1/2" end fillers and end splashers are included.

Matching Cabinets For Extra Storage

UPPER STORAGE CABINET

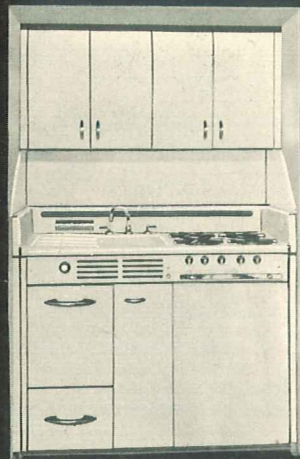
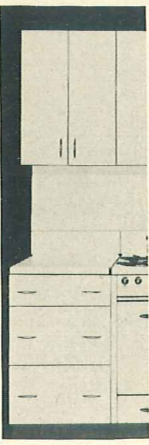
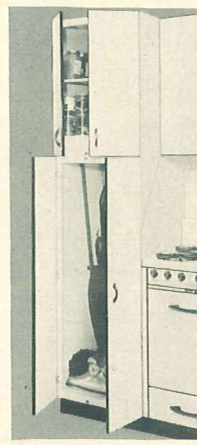
Available in 18" and 24" widths. 30" high. 18" Cabinet has one door. 24" Cabinet has 2 doors. Matching back splashers.

UTILITY AND IMPLEMENT CABINETS

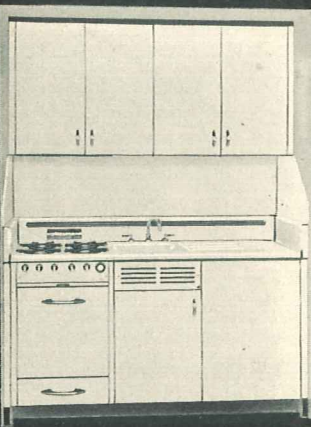
Available in 15" and 21" widths. 87" high. Utility cabinet has 7 shelves, five adjustable. Implement cabinet has two shelves, one adjustable above implement storage compartment.

BASE CABINET

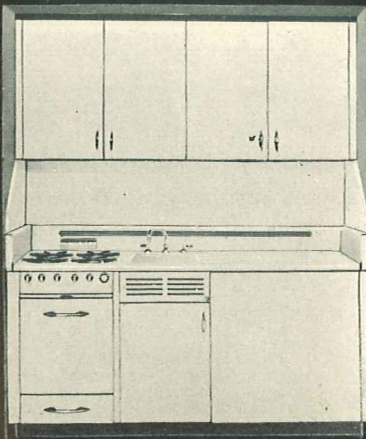
3 drawers—designed to match Series 60 and 69 kitchens. Available in 18" and 24" width. 36" high. Matching heavy steel top with vitreous porcelain finish.



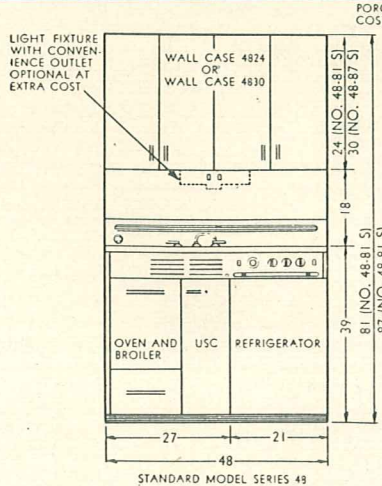
SERIES 48—Recess Model—Gas



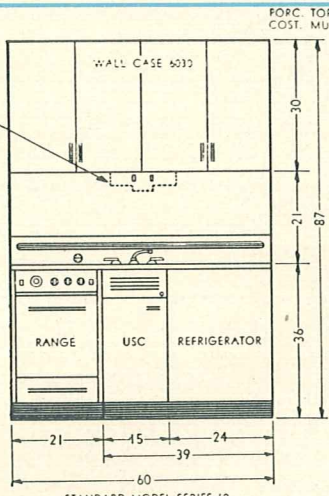
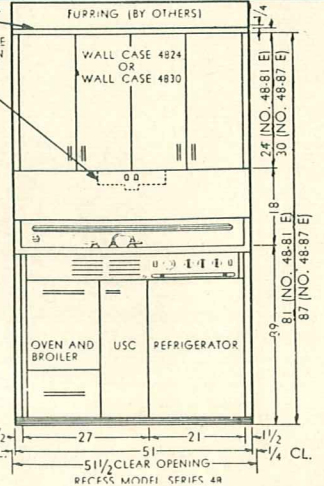
SERIES 60—Recess Model—Gas



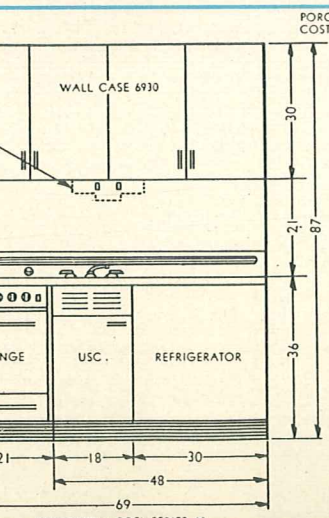
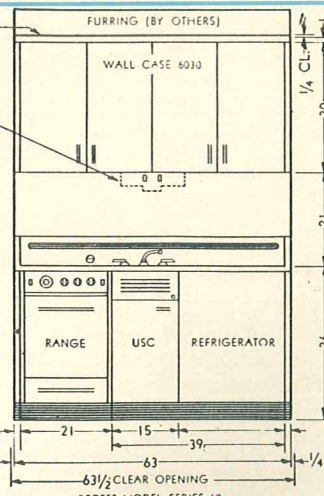
SERIES 69—Recess Model—Gas



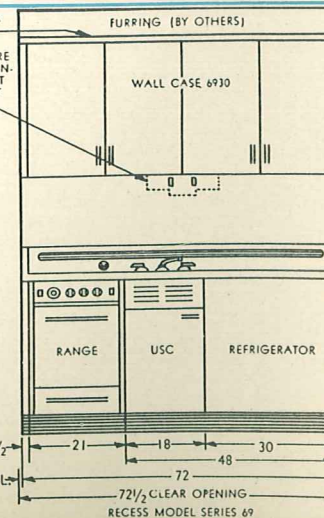
PORC. TOP MOULDING OPTIONAL AT EXTRA COST. MUST BE ORDERED WHEN DESIRED.



PORC. TOP MOULDING OPTIONAL AT EXTRA COST. MUST BE ORDERED WHEN DESIRED.



PORC. TOP MOULDING OPTIONAL AT EXTRA COST. MUST BE ORDERED WHEN DESIRED.



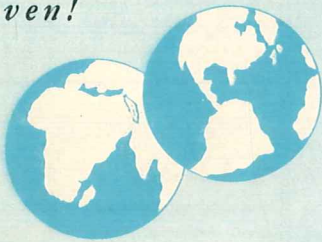
DWYER KITCHENS HAVE EXCLUSIVE DWYER FEATURES



Made by specialists in compact kitchens for over a quarter century

Dwyer Kitchens are designed, engineered and manufactured entirely in our own plant . . . by men who have concentrated on compact kitchens since 1926. Persistent effort has developed kitchens with maximum facilities in minimum space while retaining the trouble-free durability so essential in the rugged service of rental properties.

Proven!



throughout the United States and in 37 foreign lands!

From Hawaii to Honduras, from Belgium to Italy, from Iceland to the Congo, you'll find Dwyer Kitchens. 42 distributors in the United States and 39 in foreign lands have placed Dwyer Kitchens on both American continents, in Europe, Asia, Africa and the islands of the Seven Seas.



Enamel? *No*
Porcelain? *Yes*

Childish efforts at art, smudges of grease and syrup and dirt wipe off the porcelain surfaces like magic. Vitreous porcelain is *not* enamel or baked enamel. It is mineral, fused to steel in the intense heat of 1600-degree furnaces . . . just like the porcelain of your bathroom fixtures.

Gas and Electric Ranges of Modern Design



Conveniently located broiler makes broiling a pleasure.

2-burner ovens with automatic heat control. Convenient waist-high broiler. Heavy Fiberglas insulation. Utensil drawer on ball-bearing rollers.

Series 60-69 oven and broiler illustrated. Oven width slightly less on Series 48.

ELECTRIC RANGE

Underwriters' approved. Has 3 Monotube top burners of Inconel and stainless steel. Greater utensil contact area results in amazing speed and efficiency. 7-heat switches give speeds for every cooking need. Top and oven burner indicator lights. Tilting top burners and removable oven-broiler burners make cleaning easy.

GAS RANGE

A.G.A. approved. Gives maximum efficiency with city or bottled gas. 4 top burners have aluminum heads with built-in automatic lighting. Precision-ground valves insure positive flame control from high to simmer. All burners removable for easy cleaning. Even heat distribution and exceptional oven performance proven in impartial tests.



Large, roomy one piece oven. Rounded corners are easy to clean.

Quiet and Trouble-Free Electric Refrigerators



Four cubic foot (net) refrigerator in the compact Series 48.

Hermetically sealed unit permanently silent; never needs oiling. Covered by 5-year warranty. Welded steel cabinet with genuine vitreous porcelain interior and front. Heavy Fiberglas insulation. Door opens automatically at touch of push-button . . . swings easily on ball-bearing hinges; closes quietly. Automatic interior light.

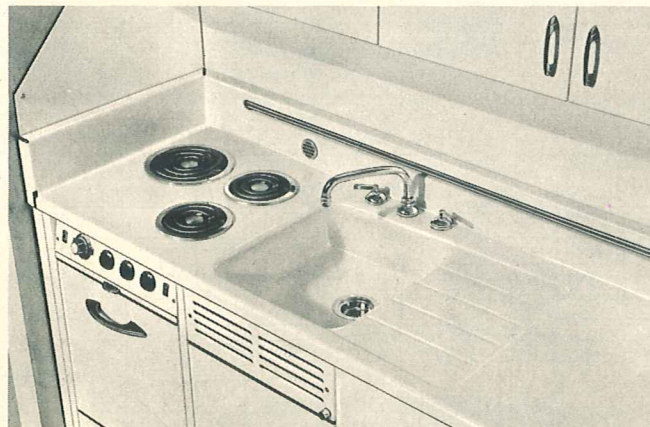
Frozen food compartment (Series 60-69) has 2 ice-cube trays plus space for 12 standard frozen food packages.

Each Dwyer Refrigerator operated in 5-hour test in 110-degree hot-room where performance is automatically recorded.



Six cubic foot (net) refrigerator in the Series 69. Same frozen food compartments in Series 60.

One-piece Porcelain Sink-and-Range Top



Range-top, deep bowl sink, drain-board and worktop are one continuous piece of gleaming white, acid-resisting vitreous porcelain on heavy 14-gauge steel. Not a crack or crevice to harbor dirt and grease. Rounded corners easy to clean. Included are chrome-plated brass mixing faucet, with non-splash aerated nozzle, and crumb cup strainer.

Every mechanical part of a DWYER Kitchen can be serviced or replaced from the front . . . without moving any section of the kitchen assembly.

Manufactured by DWYER PRODUCTS CORPORATION • Michigan City, Indiana